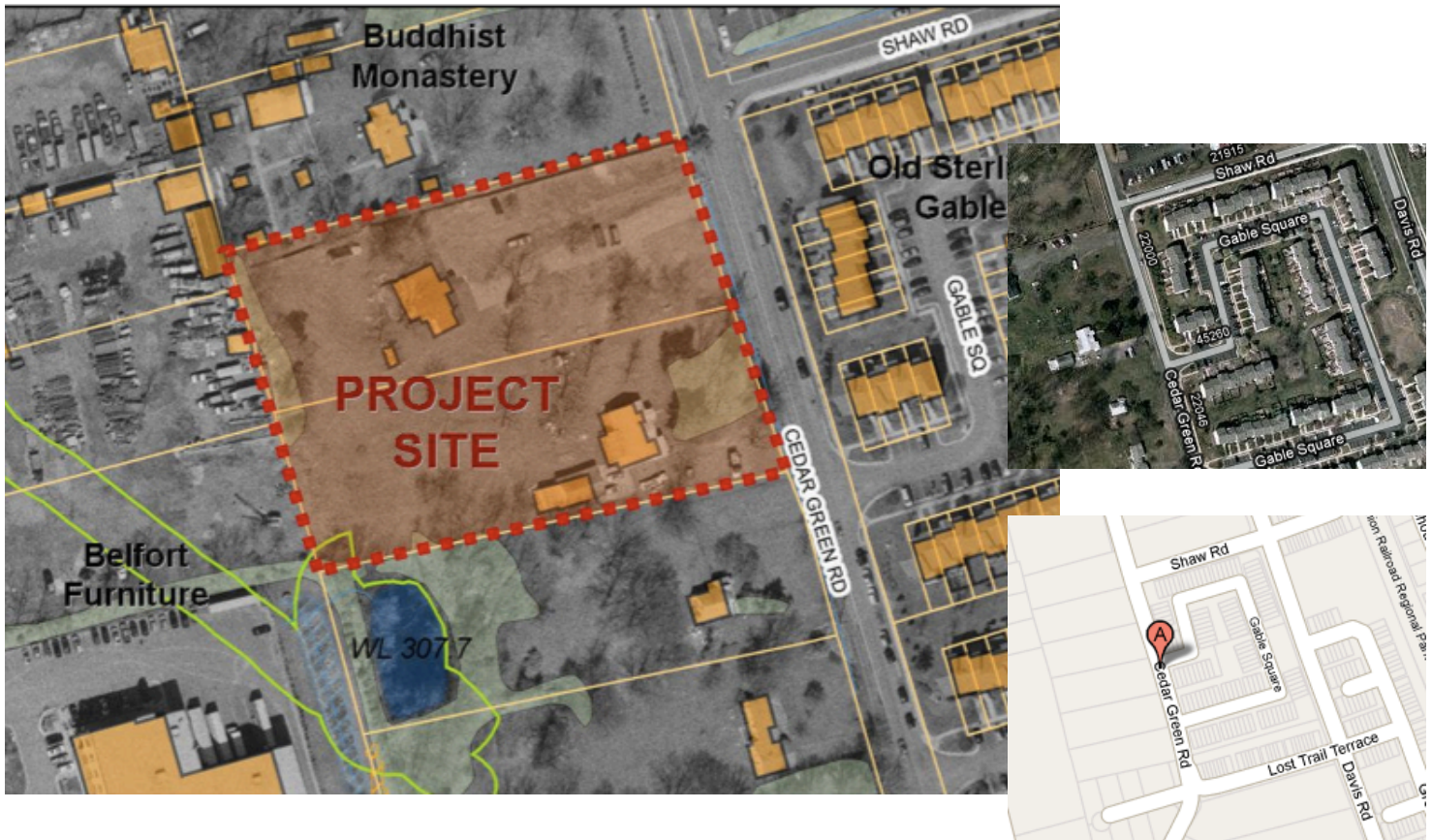


Question? email: [theresa.ryan@oldsterlinggable.org](mailto:theresa.ryan@oldsterlinggable.org)



## Loudoun County Board of Supervisors Hearing

The Iglesia Galilea de las Asambleas de Dios of Sterling, Virginia rezoning application has been approved by the Planning Commission. The application called for rezoning approximately 2.9 acres from the R-4 (Single Family Residential) to the PD-IP (Planned Development-Industrial Park) zoning district in order to develop a church.

You are encouraged to attend both the meeting with the Church planners as well as the Public Hearing with the Board of Supervisors, and learn how this might impact the Old Sterling Gable Conservancy Community.

The meeting with the Church planners will be on Sunday January 24th at 6 p.m. to discuss a few concerns (**listed on the side**) before the Hearing. The Board of Supervisors hearing is scheduled for Feb 8th. The time and location will be posted on the OSG Events page as soon as it is known.

Meeting with Church: January 24, 2010 6 PM  
22217 CEDAR GREEN ROAD, STERLING, VA 22164

Public Hearing: February 8, 2010

ADDRESS WILL BE POSTED TO [HTTP://WWW.OLDSTERLINGGABLE.ORG/EVENTS.HTML](http://www.oldsterlinggable.org/events.html) WHEN IT BECOMES AVAILABLE

### Topics to discuss

- Traffic - We have asked for years for a stop sign on Cedar Green/Shaw. With the increase in traffic, especially on church days, can the church also request one from VDOT?
- Safety - Will the church be building a sidewalk along Cedar Green? It is a narrow road, and we are also concerned with regard to parking along the streets in large numbers during events and services. Also lighting is a concern along Cedar Green, what are plans in that respect?
- Noise - Events at the church that have been already held, are heard even at the far end of our community. We are concerned that the number of the events will increase, and the noise as well.
- Separation - Is the church currently planning on planting trees along Cedar Green? This would help with noise separation, and also property separation.
- Fence - We have had mention that the current fence (painted partially blue, and the connecting piece blue and white) is an eyesore, and would have been a dealbreaker if it had been painted before the homeowner had purchased their home. Could the fence be painted a wood color, as we are so close in proximity?! It is of great concern to us as an association when we hear that a homeowner will not purchase because of a neighboring situation.